

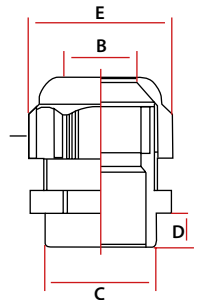
## PG TYPE IP 68 POLYAMIDE CABLE GLAND



\*Including lock nuts

RAL 7001 CODE	RAL 7035 CODE	RAL 9005 CODE	SIZE	MOUNTING DIA C	CABLE DIE MIN-MAX B	THREAD LENGTH D	AA	CORNERS	BOX/ CARTON
9000	9101	9102	PG-7	12.5	3-6	7	15	17	450 / 6750
9001	9111	9112	PG-9	15.5	4-8	7	18	20	300 / 4500
9002	9121	9122	PG-11	18.5	5-10	7	20	23	200 / 3000
9003	9131	9132	PG-13.5	20.5	6-12	7	22	25	175 / 2625
9004	9141	9142	PG-16	22.5	10-14	8	24	27	125 / 1875
9005	9151	9152	PG-21	28.5	13-18	8	30	34	75 / 1125
9006	9161	9162	PG-29	37.5	18-25	8	40	45	40 / 600
9007	9171	9172	PG-36	47.5	24-32	10	55	61	20 / 300
9008	9181	9182	PG-42	55.0	32-38	12	58	65	15 / 225
9009	9191	9192	PG-48	60.0	37-44	12	65	72	12 / 180

## METRIC TYPE IP 68 POLYAMIDE CABLE GLAND



\*Including lock nuts

RAL 7001 CODE	RAL 7035 CODE	RAL 9005 CODE	SIZE	MOUNTING DIA C	CABLE DIE MIN-MAX B	THREAD LENGTH D	AA	CORNERS	BOX/ CARTON
9050	9201	9202	M 12 x 1.5	12	3-6.5	10	15	17	450 / 6750
9051	9211	9212	M 16 x 1.5	16	5-10	10	22	25	200 / 3000
9052	9221	9222	M 20 x 1.5	20	6-12	10	24	27	150 / 2250
9053	9231	9232	M 25 x 1.5	25	13-18	10.5	33	38	75 / 1125
9054	9241	9242	M 32 x 1.5	32	18-25	16	42	48	40 / 600
9055	9251	9252	M 40 x 1.5	40	24-32	18	43	58	20 / 300



### PG TYPE POLYAMIDE BLINDSTOP



- Colour
- Ral: 7035
  - Ral: 7001
  - Ral: 9005

RAL 7001 CODE	RAL 7035 CODE	RAL 9005 CODE	SIZE	MOUNTING DIA C	PCS/BOX
9090	9301	9302	PG-7	12..5	250
9091	9311	9312	PG-9	15.5	250
9092	9321	9322	PG-11	18.5	250
9093	9331	9332	PG-13.5	20.5	250
9094	9341	9342	PG-16	22.5	250
9095	9351	9352	PG-21	28.5	250
9096	9361	9362	PG-29	37.5	150
9097	9371	9372	PG-36	47.5	100

### RUBBER BLINDSTOP



CODE	SIZE	MOUNTING DIA C	PCS/BOX
9490	PG-13.5	17	100
9491	PG-16	22.8	100
9492	PG-21	28.6	100
9493	PG-29	37.3	100
9494	PG-36	47	100
9495	PG-42	55	50

### PG & METRIC TYPE SPIRAL CABLE GLANDS



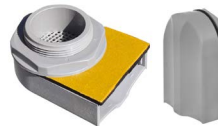
COLOUR	PG CODE	PG SIZE	METRIC CODE	METRIC SIZE	PCS/BOX
Ral: 7001	9275	PG 7	9475	M 12 x 1.5	200
	9281	PG 11	9478	M 16 x 1.5	100
	9284	PG 13.5	9481	M 20 x 1.5	80
	9290	PG 21	9484	M 25 x 1.5	30
Ral: 7035	9276	PG 7	9476	M 12 x 1.5	200
	9282	PG 11	9479	M 16 x 1.5	100
	9285	PG 13.5	9482	M 20 x 1.5	80
	9291	PG 21	9485	M 25 x 1.5	30
Ral: 9005	9277	PG 7	9477	M 12 x 1.5	200
	9283	PG 11	9480	M 16 x 1.5	100
	9286	PG 13.5	9483	M 20 x 1.5	80
	9292	PG 21	9486	M 25 x 1.5	30

### PANEL AIRFLOW BLINDSTOP



CODE	DESCRIPTION	PACKAGE
9510	M 25 x 1.5	100
9511	Panel Airflow Blindstop	
9512		

### PANEL AIRFLOW EQUIPMENT (IP54)



CODE	DESCRIPTION	PACKAGE
9500	M 40 x 1.5	50
9501	Panel Airflow Equipment	
9502		

### DRAINAGE EQUIPMENT



CODE	DESCRIPTION	PACKAGE
9520	Ø 16 Drainage Equipment	100
9521		
9522		

### SIEMENS BELLOWS



CODE	DESCRIPTION	BOX
İRPKT-1050	Bellows / 180 x 64 Siemens	70

### MEDIUM VOLTAGE CABLE BELLOWS



CODE	DESCRIPTION	BOX
İRPKT-1030	Ø100 Plastic Cable Holder	100
İRPKT-1040	Ø66 Plastic Cable Holder	100