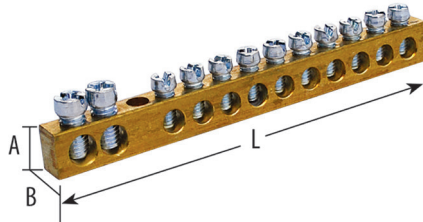
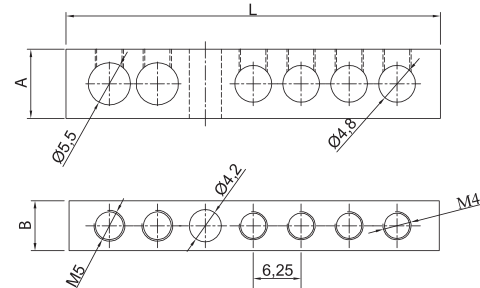


SLOTTED GROUNDED PANEL TERMINAL CONNECTORS 80 A (6.5 x 9 mm²)



* Custom production available upon request.



CODE	DESCRIPTIONS	A	B	L ± 2	Pcs.Box
1080101	2/3 = 5 Holes	9	6,5	42	50
1080102	2/5 = 7 Holes	9	6,5	54	50
1080103	2/8 = 10 Holes	9	6,5	73	50
1080104	2/10 = 12 Holes	9	6,5	86	50
1080105	2/13 = 15 Holes	9	6,5	105	50
1080106	2/20 = 22 Holes	9	6,5	148	50
1080107	2/40 = 42 Holes	9	6,5	285	50
1080108	2/60 = 62 Holes	9	6,5	410	50
1080109	2/80 = 82 Holes	9	6,5	535	50
1080110	1 meter 159 Holes	9	6,5	1000	50

MAX. CABLE SECTION			
INCOMING		OUTGOING	
With Terminal	Without Terminal	With Terminal	Without Terminal
10	16	6	10

*Multi Core Cables should be used with a Cord End Terminal