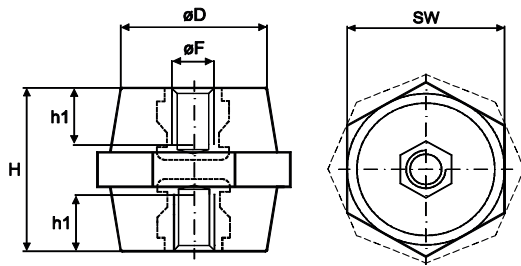


LOW VOLTAGE STANDOFF INSULATORS

* Threads: steel zinc coated (upon request brass, stainless steel, 8.8 grade steel)

* Upon request: steel bolts

Technical Data



Part No.	Dimensions (mm)					Service Voltage ~kV	Test Voltage ~kV	Cantilever Strength kN	Tensile Strength kN	Max. Tightening Torque Nm	Torque Strength Nm	Weight kg/100 pcs.	Box Qty.
	H	øF	SW	øD	h1								
EA-201706	20	M6	Hex 17	15	5	0,6	3	1	2	3	10	1.25	100
EA-252205	25	M5	Hex 22	18	6	1	6	1	3	2.5	10	2.00	100
EA-252206		M6			6								
EA-303006	30	M6	Hex 30	26	6	1,5	10	3	6	12	20	5.40	80
EA-303008		M8			8								
EA-303010		M10			9								
EA-304008	30	M8	Hex 40	36	9	1,5	10	5	9	20	50	8.50	100
EA-353206	35	M6	Hex 32	28	8	1,5	12	4.5	8	12	20	7.00	100
EA-353208		M8			10								
EA-353210		M10			10								
EA-353508	35	M8	Hex 35	30	10	1,5	12	5	6.5	20	50	7.80	100
EA-353510					M10								
EA-354006	35	M6	Hex 40	35	8	1,5	12	4.5	8	12	20	8.60	100
EA-354008		M8			10								
EA-354010		M10			10								
EA-403006	40	M6	Hex 30	26	8	2	15	2	6	12	20	6.90	60
EA-403008		M8			10								
EA-403606	40	M6	Hex 36	32	8	2	15	4.5	6	12	20	10.60	100
EA-403608		M8			10								
EA-403610		M10			12								
EA-404006	40	M6	Hex 40	35	8	2	15	4.5	6	12	20	10.20	75
EA-404008		M8			10								
EA-404010		M10			12								
EA-404012		M12			11								
EA-404610	40	M10	Hex 46	40	12	2	15	8	11	40	80	14.00	50
EA-454608	45	M8	Hex 46	38	10	2	15	6	8	20	50	14.80	50
EA-454610		M10			12								
EA-454612		M12			15								
EA-503606	50	M6	Hex 36	29	8	2	15	4	9	12	20	10.50	80
EA-503608		M8			10								
EA-503610		M10			14								
EA-503612		M12			15								
EA-504010	50	M10	Hex 40	28	14	2	15	5	13	40	80	14.00	50
EA-505008	50	M8	Hex 50	42	10	2	15	6.5	11	20	50	18.50	50
EA-505010		M10			14								
EA-505012		M12			15								
EA-604010	60	M10	Hex 40	35	14	3	20	4.5	20	40	90	16.20	50
EA-605012	60	M12	Hex 50	42	18	3	15	8	20	70	140	26.00	32
EA-605508	60	M8	Hex 55	43	15	3	15	6	15	20	50	28.00	50
EA-605510		M10			14								
EA-605512		M12			20								
EA-634110	63	M10	Hex 41	31	15	3		6	15	40	90	16.00	50
EA-754610	75	M10	Hex 46	36	17	3	20	4	16	40	90	23.10	9
EA-754612		M12			20								
EA-1006510	100	M10	Hex 65	52	18	5	26	8	30	40	100	66.00	
EA-1006512		M12			18								
EA-1006516		M16			24								