

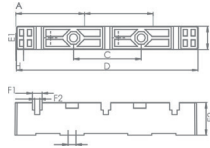
## PLASTIC BUSBAR SUPPORTS

Low tension post insulators is made of non-flammable (V0) material. It is used for the same purpose as BMC insulators. It is more flexible than BMC insulators due to refraction rate is low. It's chemical characters are listed below:

- Fiber Glass reinforced poliamid (PA6) nonflamable, has 30% of fibers.
- Standart color: Black
- Nuts: Steel-zinc line. (Brass material can used if needed)
- Bolts: Cr3 8.8 steel bolt

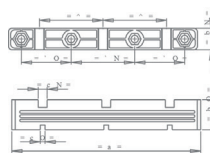


### 3x1F Support Insulator



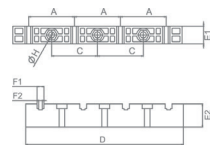
CODE	TYPE	Dimensions (mm)									Min Strength kN	Box Qty
		A	C	D	E1	E2	F1	F2	H			
PLST1001	3x1F/ 5-10mm	74	73	196	25	34,5	10,5	5,5	Ø8,5	5	50	

### 3x1F Support Insulator



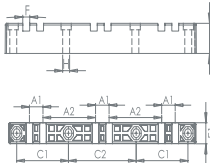
CODE	TYPE	Dimensions (mm)									Min Strength kN	Box Qty
		A	C	D	E1	E2	F1	F2	H			
PLST1015	3x1F/ 5-10mm	74	74	58,14	220	25	35	10,5	Ø8,5	5	50	

### 3x1F+N Support Insulator



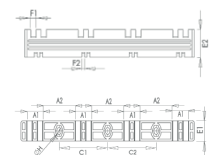
CODE	TYPE	Dimensions (mm)									Min Strength kN	Box Qty
		A	C	D	E1	E2	F1	F2	H			
PLST1003	3x1F+N/ 5-10mm	65	65	240	25,5	35,0	10,5	5,5	Ø9	5	50	

### 3x2F Support Insulator



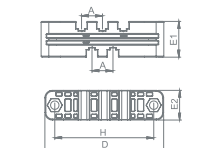
CODE	TYPE	Dimensions (mm)									Min Strength kN	Box Qty
		A1	A2	C1	C2	D	E1	E2	F	H		
PLST1002	3x2F/ 10mm	20,5	81,3	80	105	290	25,0	34,5	10,5	Ø8,5	5	50

### 4x2F Support Insulator



CODE	TYPE	Dimensions (mm)									Min Strength kN	Box Qty	
		A1	A2	C1	C2	D	E1	E2	F1	F2			H
PLST1016	4x2F / 10mm 4x2F / 10mm	31	64	95	95	340	25,0	35	10,5	5,5	Ø8,5	5	50

### 1x2F/1x3F Support Insulator



CODE	TYPE	Dimensions (mm)					Min Strength kN	Box Qty
		A	D	H	E1	E2		
PLST1012	1x2F - 1x3F / 10mm	20,5	120	100	35	30	5	100