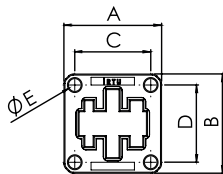
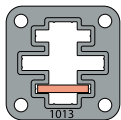


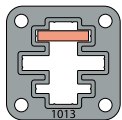
THROUGH WALL BUSHINGS



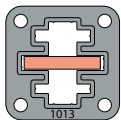
CODE	TYPE	Dimensions (mm)					Min Strength kN	Box Qty
		A	B	C	D	E		
PLST1013	Bushing Insulators 20x5/20x10/40x10/50x10	45,0	45,0	35,0	35,0	5,80	5	100
PLST1014	Bushing Insulators 20x5/20x10/40x10/50x10	60,0	60,0	45,0	45,0	6,50	5	100



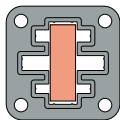
20 x 3



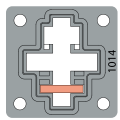
20 x 4



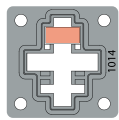
30 x 5



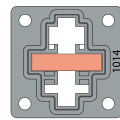
30 x 10



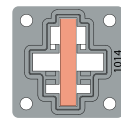
20 x 5



20 x 10



40 x 10



50 x 10



PROPERTIES

Material	Glass Reinforced Polyamid 6.6
Conductor Temp	140 °C
Flamability	UL94-V0
Equipment Voltage U	690V
Insulation Voltage U	8 kV
Glow Wire	960 °C

